

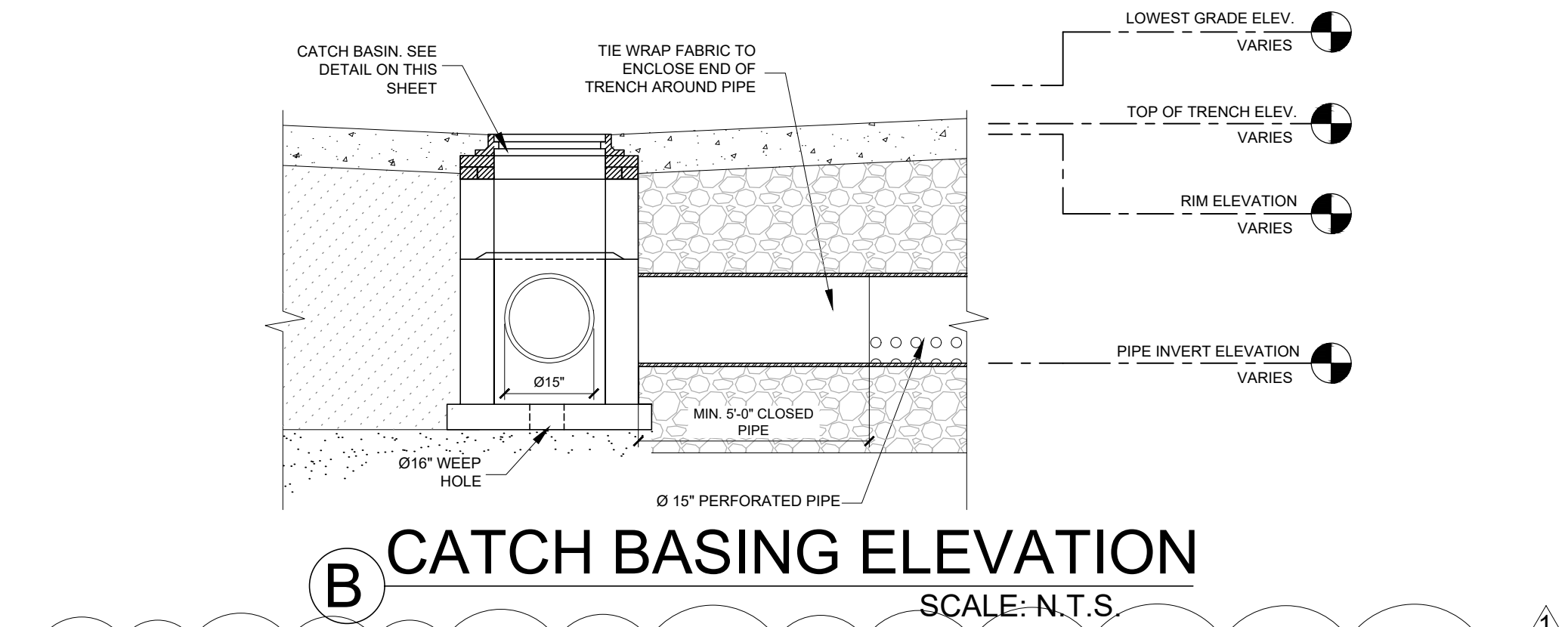
PIPE DIA.	W ¹ (IN)	W ² (IN)	T (GAUGE)	H (IN)
15"	21"	21"	16	VARIES
18"	24"	24"	16	VARIES
21"	30"	30"	16	VARIES
24"	30"	38"	16	VARIES
30"	38"	42"	14	VARIES
36"	42"	48"	14	VARIES
42"	48"	54"	14	VARIES
48"	54"	60"	14	VARIES
54"	60"	66"	14	VARIES

- RECTANGULAR STRUCTURE
- ROUND STRUCTURE

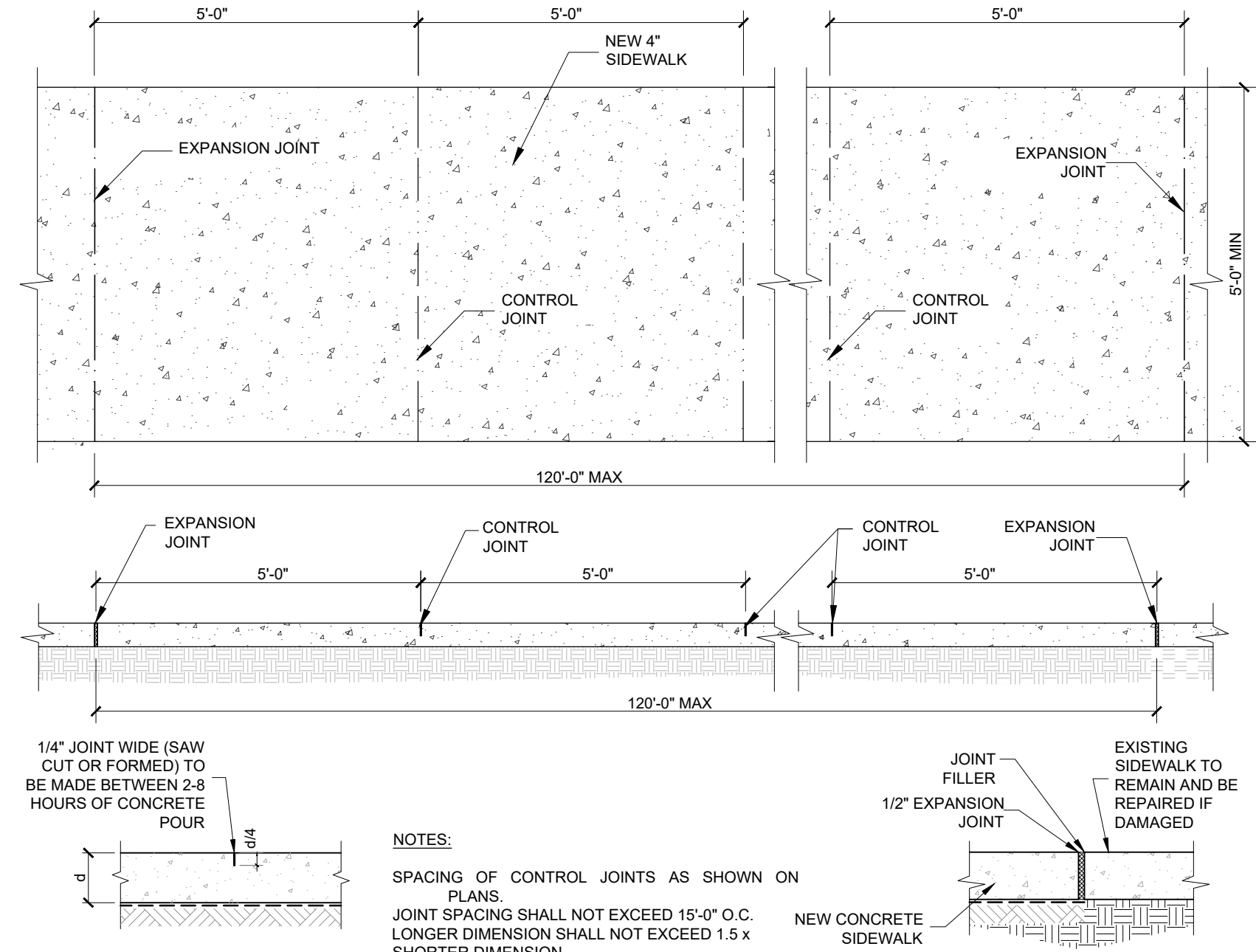
- ALUMINUM SHEET OF SAME THICKNESS (GAUGE) AS PIPE SHALL BE WELDED TO CLOSE OPENING AT THE TOP.
- THE BOTTOM ELEVATION OF THE POLLUTION RETARDANT BAFFLE MUST BE AT LEAST 2' BELOW CONTROL ELEVATION.
- NEOPRENE ADHESIVE BACKED GASKET, OR APPROVED EQUAL (1" x 2") SHALL BE INSTALLED ON THE SIDES AND TOP
- POLLUTION RETARDANT BAFFLE TO BE FASTENED IN PLACE WITH 3/8"x4" STAINLESS STEEL "RED HEADS", OR APPROVED EQUAL
- ALL EXFILTRATION TRENCHES SHALL HAVE A POLLUTION RETARDANT BAFFLE AT EACH CONNECTION POINT TO A STRUCTURE (SEE EXFILTRATION TRENCH DETAIL).
- FIBERGLASS BAFFLES ARE NOT PERMITTED.
- MOUNTING BRACKETS MAY BE ADDED TO FLAT BARS TO EASE INSTALLATION IN ROUND
- SEE NOTE 7

POLLUTION BAFFLE DETAIL

SCALE: N.T.S.

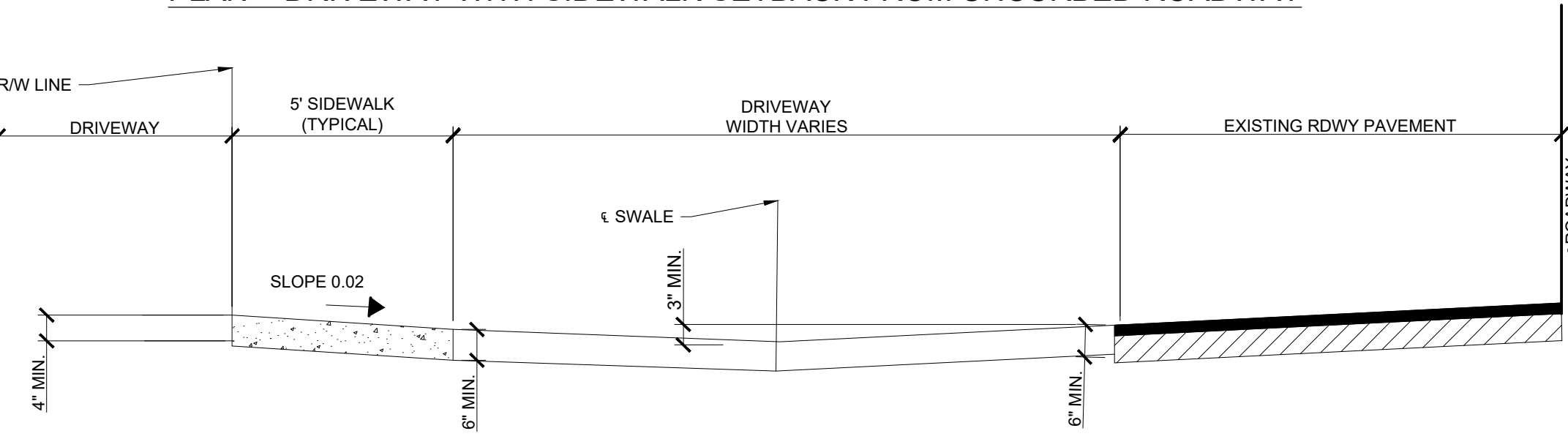
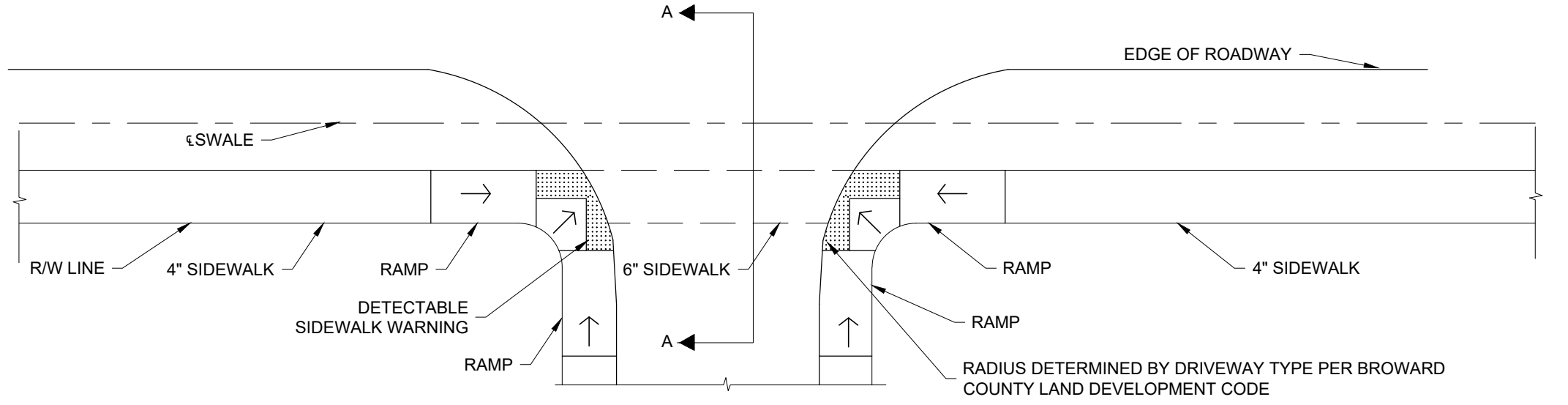


CATCH BASIN	RIM ELEV. (FT)	BOTTOM ELEV. (FT)	INVERT ELEVATION			PIPE DIAMETER		
			NORTH	SOUTH	EAST	NORTH	SOUTH	EAST
CB-1	12.80	7.05	9.55	-	9.55	18"	-	18"
CB-2	12.80	7.05	-	-	9.55	-	-	18"
CB-3	12.85	7.05	11.00	9.55	-	6"	18"	-



SIDEWALK DETAIL

SCALE: N.T.S.



DRIVEWAY DETAIL

SCALE: N.T.S.

CONEMCO ENGINEERING, INC. DBA Conemco Consultants

782 NW 42ND AVENUE UNIT 635 MIAMI, FL 33126

MAIN NUMBER 888-636-1536

CA # 2947

JOSE A. COMPRES, P.E.

FLORIDA P.E. LIC. # 65557

CONEMCO ENGINEERING, INC.

PROJECT NAME / ADDRESS:

324 HAUS MIXED USE / NEW BUILDING - CIVIL PLANS REDESIGN

324 NW 6TH STREET, POMPAÑO BEACH, FL 33060

CLIENT/TOWNER:

AUSTIN FOX ARCHITECTURE

1754 E COMMERCIAL BLVD, FORT LAUDERDALE, FL 33334

REVISIONS	DATE
1 CITY COMM.	09-08-2025

DATE:	9/12/2025
SCALE:	AS SHOWN
DRAWN:	FP
CHECKED:	PS
APPVD:	JC
PROJECT ID:	FPV-C251004
CONTRACT NO:	-

SHEET NAME:

DRAINAGE AND SIDEWALK DETAILS

PZD

DRAWING NO. C-501

P222-12000032

02/25/2026

No. 18